



MDFI Polyclonal Antibody

Catalog No	YP-Ab-01861
Isotype	IgG
Reactivity	Human;Mouse
Applications	WB;ELISA
Gene Name	MDFI
Protein Name	MyoD family inhibitor
Immunogen	The antiserum was produced against synthesized peptide derived from human MDFI. AA range:103-152
Specificity	MDFI Polyclonal Antibody detects endogenous levels of MDFI protein.
Formulation	Liquid in PBS containing 50% glycerol, 0.5% BSA and 0.02% sodium azide.
Source	Polyclonal, Rabbit,IgG
Purification	The antibody was affinity-purified from rabbit antiserum by affinity-chromatography using epitope-specific immunogen.
Dilution	Western Blot: 1/500 - 1/2000. ELISA: 1/10000. Not yet tested in other applications.
Concentration	1 mg/ml
Purity	≥90%
Storage Stability	-20°C/1 year
Synonyms	MDFI; MyoD family inhibitor; Myogenic repressor I-mf
Observed Band	25kD
Cell Pathway	Nucleus . Cytoplasm .
Tissue Specificity	Fetal brain,Muscle,
Function	function:Inhibits the transactivation activity of the Myod family of myogenic factors and represses myogenesis. Acts by associating with Myod family members and retaining them in the cytoplasm by masking their nuclear localization signals. Can also interfere with the DNA-binding activity of Myod family members. Plays an important role in trophoblast and chondrogenic differentiation. Regulates the transcriptional activity of TCF7L1/TCF3 by interacting directly with TCF7L1/TCF3 and preventing it from binding DNA. Binds to the axin complex, resulting in an increase in the level of free beta-catenin. Affects axin regulation of the WNT and JNK signaling pathways.,similarity:Belongs to the MDFI family.,subunit:The C-terminus interacts with AXIN1 and LEF1.,
Background	This protein is a transcription factor that negatively regulates other myogenic family proteins. Studies of the mouse homolog, I-mf, show that it interferes with myogenic factor function by masking nuclear localization signals and preventing DNA binding. Knockout mouse studies show defects in the formation of vertebrae



and ribs that also involve cartilage formation in these structures. [provided by RefSeq, Jul 2008],

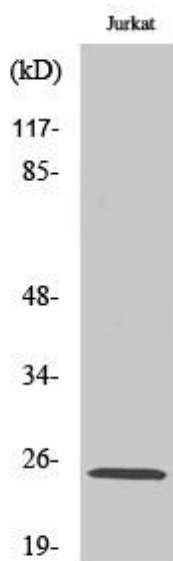
matters needing attention

Avoid repeated freezing and thawing!

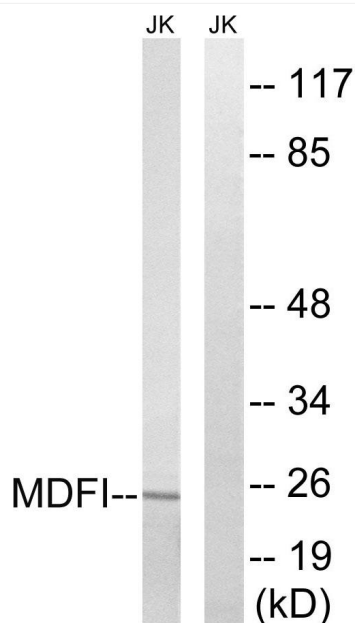
Usage suggestions

This product can be used in immunological reaction related experiments. For more information, please consult technical personnel.

Products Images



Western Blot analysis of various cells using MDFI Polyclonal Antibody



Western blot analysis of lysates from Jurkat cells, using MDFI Antibody. The lane on the right is blocked with the synthesized peptide.